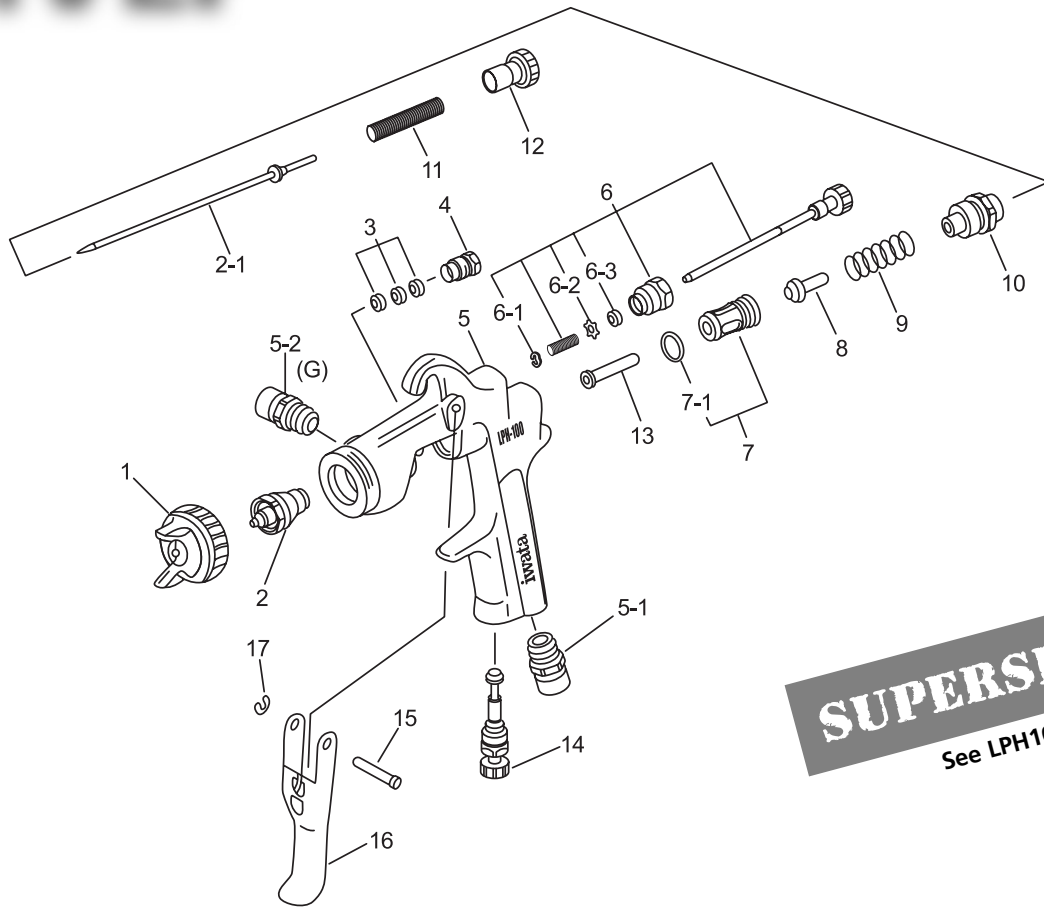


HVLP

GRAVITY



SUPERSEDED
See LPH100LV

Item No.	Part No.	Description	Item No.	Part No.	Description
1	93804600	Air Cap Set H2	5-2	93584530	Fluid Nipple
1A	93576530	# Air Cap Cover Ring - Black	6	93842531	Fan Pattern Adjust Set
1B	93608320	# Cap Packing - White	7	93843530	Air Valve Seat Set
2	93690530	Fluid Nozzle 0.8mm	7-1	96638008	# O Ring
2	93698530	Fluid Nozzle 1.0mm	8	93591530	Air Valve
2	93573530	Fluid Nozzle 1.2mm	9	93719530	Air Valve Spring
2	93577530	Fluid Nozzle 1.3mm	10	93844531	Fluid Adjust Guide
2	93700530	Fluid Nozzle 1.5mm	11	93593530	Fluid Needle Spring
2	93702530	Fluid Nozzle 1.8mm	12	93594532	Fluid Adjust Knob
2	93717530	Fluid Nozzle 2.0mm	13	93595530	Air Valve Shaft
2-1	93537600	Fluid Needle 0.8, 1.0mm	14	93845531	Air Adjust Set
2-1	93578530	Fluid Needle 1.2 to 1.5mm	15	93667360	Trigger Stud
2-1	93703530	Fluid Needle 1.8, 2.0mm	16	93597530	Trigger LPH100
2+2-1	93855600	Nozzle Needle Set 0.8mm	17	93912030	# E Stopper (2 pcs)
2+2-1	93856600	Nozzle Needle Set 1.0mm		96990600	Brush
2+2-1	93833530	Nozzle Needle Set 1.3mm		93811600	Inner Pressure Measuring Cap Set. G2
2+2-1	93802600	Nozzle Needle Set 1.5mm		93805600	Inner Pressure Measuring Cap Set. H2
3	93834530	# Needle Packing Set		GS01	Spray Gun Spanner
4	93581531	Needle Packing Seat		W100RSK	W100 & LPH100 Reservice Kit
5	93807600	Body Set			includes items with #
5-1	93660300	Air Nipple			