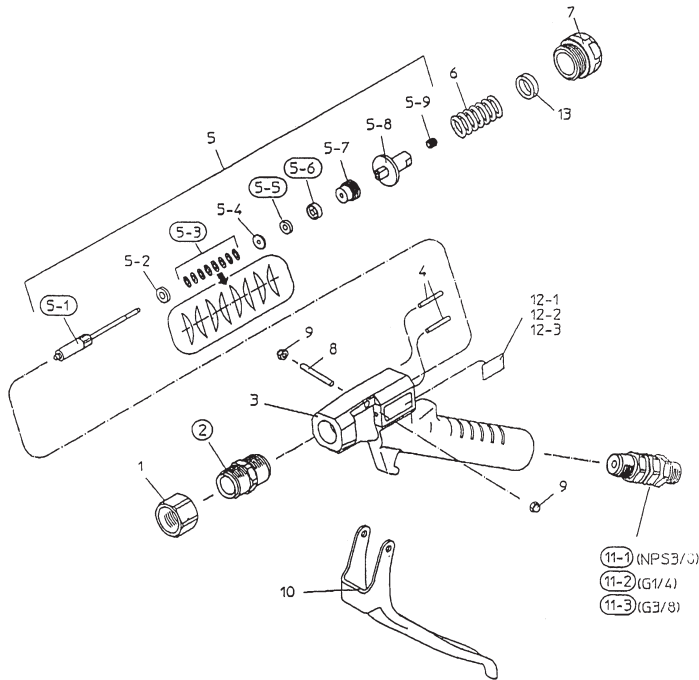


SPARE PARTS LIST



PART NAME	Ref.part
NOZZLE HOLDER	1
NOZZLE GLAND SET	● 2
GUN BODY	3
NEEDLE SEAT	4
FLUID NEEDLE SET	5
NEEDLE BAR SET	● 5-1
CONICAL SPRING HOLDER	5-2
CONICAL SPRING WASHER	● 5-3
PACKING HOLDER	5-4
SUB PACKING	● 5-5
NEEDLE PACKING	● 5-6
NEEDLE PACKING SEAT	5-7
NEEDLE SPRING HOLDER	5-8
SCREW	5-9
NEEDLE SPRING	6
NEEDLE SPRING SEAT	7
TRIGGER STUD	8
HEX. CAP NUT	9
TRIGGER SET	10
UNIVERSAL JOINT (NPS 3/8")	● 11-1
UNIVERSAL JOINT (G 1/4")	● 11-2
UNIVERSAL JOINT (G 3/8")	● 11-3
NAME PLATE	12
COLLAR	13

● Marked parts are consumable parts

- Use optional collar [13] when you use very high viscosity material, or flow resistance in nozzle inner dia, or material does not emit smoothly.
- As nozzle is not included, refer to Operating procedure on page 3 and prepare it separately on your side.