

DI CHIA RAZIONE DI CONFORMITA' - KONFORMITÄT SERKLÄRUNG - DECLARATION OF CONFORMITY- DECLARATION DE CONFORMITÉ - DECLARATION DE CONFORMITÄT - DECLARAÇÃO CE DE CONFORMIDADE - PROHLÁŠENÍ O KONFORMITĚ VÝROBKU - ÖVERENSSTÄMMELSEERKLÄRUNG - ΔΗΛΩΣΗ ΣΥΜΜΟΡΦΩΣΗΣ - SZABVÁNYAZONOSSÁGI NYILATKOZAT - CONFORMITEITSVERKLARING - KONFORMITÄT SERKLÄRUNG - ЗАЯВЛЕНИЕ О СООТВЕТСТВИИ - DECLARAȚIE DE CONFORMITATE CE - DECLARAÇÃO ZGODNOSTI NTYGM OM LAGÖVERENSSTÄMMELSE - VAATIMUSTENMUKAISUUSVAKUUTUS - VASTAVUSDEKLARATSIHOON - ATBILSTĪBAS DEKLARĀCIJA - ZJAVNA O SKLADNOSTI - ATTIKTIKTES DEKLARACIJA - VYHLÁSENIE O ZHODE - DIKJARAZZJONI TA' QBIĠ

La sottoscritta società - Die unterzeichnete Firma - The undersigned firm - La société abajo firmante - A abaixo-assinada sociedade - Nize podepsaná firma - Undertegnede selskab - Η υπογραφομένη εταιρεία - Az alulírott társaság - Ondergetekende - Selskabet - Нижнеуказанная фирма - Subsemnată societate - Nizej podpisana spólka - Undertecknade företag - Allekirjoittanut yhtiö - Vastutav firma - Apakšā norādītais uzņēmums - Podpisano podjetje - Žemiau pasirašiusi bendrovė - Dolupodpisaná spoločnosť - Id-ditta hawn taht imsemminja :

Officine Meccaniche A.N.I. S.p.a.

IT

DICHIARA SOTTO LA SUA ESCLUSIVA RESPONSABILITÀ CHE IL PRODOTTO: Aerografo per verniciatura Mod. RV è conforme alle disposizioni della Direttiva Macchine (DIRETTIVA 98/37/CE).

Via Arzignano 190 - 36072 - Chiampo (VI) - ITALY

DE	<b>ERKLÄRT UNTER IHRER ALLEINIGEN VERANTWORTUNG, DAB DAS PRODUKT:</b> Lackier-Spritzpistole Modell RV der Maschinendirektive (DIREKTIVE 98/37/EWG)
EN	<b>HEREBY DECLARES ON ITS OWN RESPONSABILITY THAT THE PRODUCT:</b> Paint Spray Gun mod. RV conforms to the regulations laid down in the EEC Directive regulating the construction of Machinery (DIREKTIVE 98/37/CE).
FR	<b>DECLARE SOUS SA RESPONSABILITE EXCLUSIVE QUE LE PRODUIT:</b> Pistolet à peinture Mod. RV est conforme aux dispositions de la Directive des Machines (DIREKTIVE 98/37/CE)
ES	<b>DECLARA BAJO SU EXCLUSIVA RESPONSABILIDAD QUE EL PRODUCTO:</b> Pistola de pintar Mod. RV es conforme a las disposiciones de la Directiva Máquinas (DIREKTIVA 98/37/CE).
PT	<b>DECLARA SOB A SUA EXCLUSIVA RESPONSABILIDADE QUE O PRODUTO:</b> Pistola de pulverizar para pintura Mod. RV está em conformidade com as disposições da Directiva de Máquinas (DIREKTIVA 98/37/CE).
CS	<b>PROHLÁŠUJE NA VLASTNÍ ZODPOVĚDNOST, ŽE VÝROBEK:</b> Lakovací stříkáč pistole typ RV odpovídá předpisům Směrnice o strojním zařízení (SMĚRNICE 98/37/EHS).
DA	<b>ERKLÆRER HELT UNDER EGET ANSVAR AT PRODUKTET:</b> Sprøjtepistol til maling Mod. RV stemmer overens med bestemmelserne i direktivet Maskiner (DIRETTIVA 98/37/ EF)
EL	<b>ΔΗΛΩΝΕΙ ΥΠΟ ΤΗΝ ΑΠΟΚΛΕΙΣΤΙΚΗ ΤΗΣ ΕΥΘΥΝΗ ΟΤΙ ΤΟ ΠΡΟΪΟΝ:</b> Πιστόλι βαφής Μοντ. RV πληρεί τις προδιαγραφές της Οδηγίας περί Μηχανών (ΟΔΗΓΙΑ 98/37/ΕΟΚ).
HU	<b>SAJÁT KIZÁRÓLAGOS FELELŐSÉGE ALATT KIELENTI, HOGY TERMÉKE, A:</b> festékszórópisztoly lakkozáshoz RV modell megfelel a Gép Irányelvnek (98/37/EK IRÁNYELV).
NL	<b>VERKLAART ONDER ZIJN UITSLUITENDE VERANTWOORDELIJKHEID DAT HET PRODUCT:</b> verfspuitpistool model RV voldoet aan de bepalingen van de Machineryrichtlijn (RICHTLIJN 98/37/EEG)
NO	<b>ERKLÆRER PÅ EGET ANSVAR AT PRODUKTET:</b> Sprøytepistol for maling Mod. RV er i samsvar med Maskindirektivets forskrifter (DIREKTIV 98/37/EØF).
RUS	<b>ЗАЯВЛЯЕТ ПОД СОБСТВЕННОЮ ИСКЛЮЧИТЕЛЬНУЮ ОТВЕТСТВЕННОСТЬ, ЧТО ИЗДЕЛИЕ:</b> Пистолет-краскораспылитель Mod. RV соответствует требованиям директивы по машиностроению (ДИРЕКТИВА 98/37/ЕС).
RO	<b>DECLARĂ SUB PROPRIĂ ȘI EXCLUSIVĂ RESPONSABILITATE CĂ PRODUSUL:</b> Aerograful pentru vopsit Model RV este conform cu prevederile Directivei Mașini (DIREKTIVA 98/37/CE).
PL	<b>OŚWIADCZA NA WŁASNĄ WYŁĄCZNĄ ODPOWIEDZIALNOŚĆ ŻE PRODUKT:</b> Pistolet do lakierowania Mod. RV jest zgodny z rozporządzeniem Dyrektywy dla Maszyn (DYREKTYWA 98/37/WE).
SV	<b>INTYGAR SOM ENSAM ANSVARIG ATT PRODUKTEN:</b> Lackeringspistol Mod. RV överensstämmer med bestämmelserna i Maskindirektivet (EU-DIREKTIV 98/37).
FI	<b>VAKUUTTA O MALLA VASTUULLAAN, ETTÄ TUOTE:</b> Maaliruisku, malli RV on konedirektiivin (direktiivi 98/37/EY) vaatimusten mukainen.
ET	<b>DEKLAREERIB OMA VASTUTUSE ALL, ET ANTUD TOODE:</b> Värvipulverisaator, Mudel. RV vastab masinate kohta kehtivale direktiivile (DIREKTIIV 98/37/EL).
LV	<b>ZEM SAVAS PAŠAS ATBILDĪBAS PAZIŅO, KA IZSTRĀDĀJUMS:</b> Krāsas pistole, modelis RV atbilst Mašīnu Direktīvas prasībām (DIREKTĪVA 98/37/CE).
SL	<b>POD SVOJO IZKLJUČNO ODGOVORNOSTJO IZJAVLJA, DA IZDELEK:</b> Aerograf za lakiranje model RV ustreza predpisom Direktive o strojih (Direktiva 98/37/ES).
LT	<b>SU IŠIMTINE ATSAKOMYBE DEKLARUOJA, KAD PRODUKTAS:</b> Acrografas dažymui Mod. RV Atitinka Mašinų bei Staklių Direktyvos nurodymus (DIREKTYVA 98/37/CE).
SK	<b>VYHLASUJE NA VLASTNŮ ZODPOVEDNOSTĚ, ŽE VÝROBOK:</b> Stříkací pistoľ Mod. RV zodpovedá predpisom smernice o strojnom zariadení (SMERNICA 98/37/CE).
MT	<b>TIDDIKJARA TAHT IR-RESPOSABBILTA' EWLENJJA TAGHHA LI IL-PRODOTT</b> Paint Spray Gun Mudell. RV Huwa magħmul skond ir-regolamenti tad-Direttiva Magni (DIRETTIVA 98/37/CE).

Il modello della presente dichiarazione è conforme a quanto previsto nella norma EN 45014 - Das Modell der vorliegenden Erklärung entspricht den Vorschriften der Normen EN 45014 - The format of this declaration conforms with regulation EN 45014 - Le modèle de cette déclaration est conforme dans la mesure où il est prévu dans la Norme EN 45014 - El modelo de la presente declaración es conforme a lo previsto en la Norma EN 45014 - O modelo da presente declaração está em conformidade com o quanto previsto pela Norma EN 45014 - Model tohoto prohlášení odpovídá normě EN 45014 - Modellen i den foreliggende erklæring stemmer overens med bestemmelserne i EN 45014 - A jelen nyilatkozatban feltüntetett modell megfelel az EN 45014 szabvány által előírtaknak. - Het model van de onderhavige conformiteitsverklaring is conform de norm EN 45014 - Modellen denne erklæringen gjelder for, er i samsvar med forskriften EN 45014 - Образец данного заявления соответствует положениям норматива EN 45014 - Modelul prezentei declaratii este conform cu prevederile continute in norma EN 45014 - Model niniejszego zawiadzenia jest zgodny z normą EN 45014 - Modellen i detta intyg överensstämmer med vad som föreskrivs i reglerna EN 45014 - Tämä vakuutus on mallinlain standardin EN 45014 määräysten mukainen - Käesoleva deklaratsioonimudel on kooskõlas EN 45014 normatiiviga. - Šajā deklarācijā norādītais modelis atbilst normas EN 45014 prasībām - Model iz te izjave ustreza predpisom normativa EN 45014. - Šios deklaracijos modelis atitinka normos EN 45014 nurodymus. - Model tohto vyhlásenia zodpovedá predpisom normy EN 45014. - Il-mudell imsemmi f'din id-dikjarazzjoni huwa magħmul skond il-liġi EN 45014

CHIAMPO (VI)

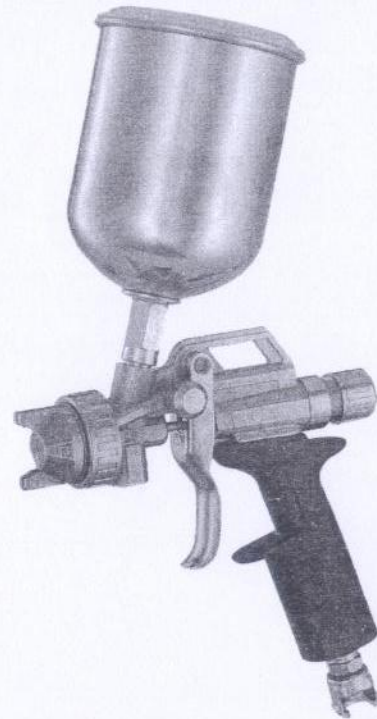
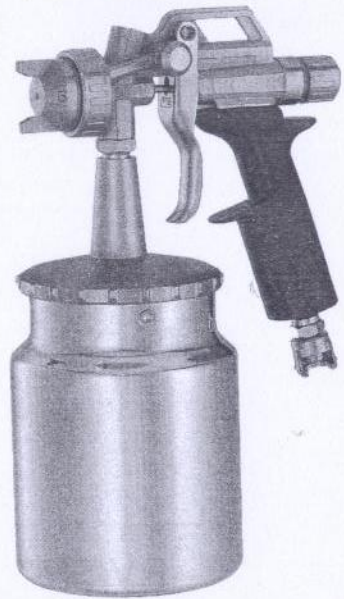
Un Procurator - Ein Prokurist - Legal Representative - Un Fondé de pouvoir - Un Procurador - Um Procurador - Prokurista - En prokurator - Ένας εκ των πληρεξουσίων - Meghatalmazott - Wettelijke vertegenwoordiger - Juridisk representant - Уполномоченный - Un Procurist - Peñomocnik - Fimatecknare - Vallutettu asiamies - Volitatud isik - Pilnvarota persona - Zastopnik - Igalotitis - Splnomocnený zástupca - Avukat :

30 / 06 / 2005

*[Signature]*



**RV**



**RV / I**

**RV / S**

- (IT) AEROGRAFO PER VERNICIATURA  
Manuale d'Istruzione d'Uso e Manutenzione
- (DE) LACKIERSPRITZPISTOLE  
Benutzungs- und Wartungsanleitung
- (FR) PISTOLET A PEINTURE  
Manuel d'utilisation et d'entretien
- (PT) PISTOLA DE PULVERIZAR PARA PINTURA  
Manual de Instruções, Uso e Manutenção
- (DA) SPRØYTEPISTOL TIL MALING  
Vejlledning til brug og vedligeholdelse
- (HU) FESTÉKSZÓRÓPISTOLY LAKKOZÁSHOZ  
Használati és Karbantartási Utasítás
- (NO) SPRØYTEPISTOL FOR MALING  
Håndbok for Bruk og Vedlikehold
- (RO) AEROGRAF PENTRU VOPSIT  
Manual de Instrucțiuni pentru Întreținut și Întreținere
- (SV) LACKERINGSPISTOL  
Instruktionsbok för drift och underhåll
- (ET) VÄRVI PULVERISAATOR  
Kasutus- ja hooldusjuhend
- (SL) AEROGRAF ZA LAKIRANJE  
Priručnik za uporabo in vzdrževanje
- (SK) STRIEKACIA PIŠTOĽ  
Priručka na použitie a údržbu
- (EN) PAINT SPRAY GUN  
Operation and Maintenance Manual
- (ES) PISTOLA DE PINTAR  
Manual de Instrucciones de Uso y Mantenimiento
- (CS) STŘÍKACÍ LAKOVACÍ PISTOLE  
Návod k použití a údržbě
- (EL) ΠΙΣΤΟΛΙ ΒΑΦΗΣ  
Εγχειρίδιο Οδηγίων Χρήσης και Συντήρησης
- (NL) VERFSPUITPISTOOL  
Handleiding voor gebruik en onderhoud
- (RUS) ПИСТОЛЕТ-КРАСКОРАСПЫЛИТЕЛЬ  
Руководство по эксплуатации и техническому обслуживанию
- (PL) AEROGRAF DO LAKIEROWANIA  
Instrukcje użytkowania i konserwacji
- (FI) MAALIRUISKU  
Käyttö- ja huolto-ohje
- (LV) KRĀSAS PISTOLE  
Izmantošanas un apkopes rokasgrāmata
- (LT) AEROGRAFAS DAŽYMIUI  
Naudojimo ir Priežiūros Instrukcija
- (MT) PAINT SPRAY GUN  
Istruzzjonijiet għall-Użu u għall-Manutenzjoni

## Operation and maintenance manual

### Paint spray gun

PLEASE READ THESE INSTRUCTIONS CAREFULLY FOR YOUR OWN SAFETY BEFORE PROCEEDING TO THE INSTALLATION, USE OR MAINTENANCE OF THE PAINT SPRAY GUN. THIS MANUAL MUST BE CONSERVED FOR FUTURE CONSULTATION.

EN

#### OVERVIEW

This Manual is an integral part of the product with which it is enclosed and must be conserved for future consultation. Carefully read the recommendations and instructions contained in this instruction booklet before carrying out installation, operating, adjusting or maintenance operations, since they give important information regarding the SAFETY OF USE and MAINTENANCE. The gun should only be used by an adequately trained operator if it is to be used safely and correctly maintained. The information given in this booklet is necessary for correct use of the gun and its components and is in addition to the normal technical know-how of operators. The safety rules inserted in this booklet are in addition to the safety regulations in force in the countries where the product is used and which should already be known and applied by operators. Contact only authorised product technical assistance and maintenance centers for further information or special problems.

#### UNPACKING

After removing the packaging material make sure the product is in perfect condition and that there are no visibly damaged parts. If in doubt, do not use the spray gun and contact the dealer from whom it was purchased. The packaging materials (plastic bags, expanded polystyrene, etc) must be disposed of in appropriate refuse-collection containers. The above mentioned materials must not be left within the reach of children as they are potential sources of danger.

#### USE AND OPERATION

This SPRAY GUN has been designed for use as a manual SPRAY PAINTING GUN and every other use will be considered inappropriate. The Manufacturer declines all liability for damage or injury caused by the inappropriate use of the manual inflation gun or the failure to respect safety warnings. Any and all tampering or modification with the equipment that has not been previously authorised releases the Manufacturer from all damage derived or ascribable to the same.

#### GENERAL SAFETY RULES

##### RISKS IN INAPPROPRIATE USE



- NEVER point the paint spray gun at people or animals.
- NEVER exceed the maximum working pressures recommended.
- ALWAYS discharge the compressed air and paint products from the paint spray gun before proceeding to the disassembly, cleaning and re-assembly of the paint spray gun.

##### RISKS TO HEALTH



Many paint products contain organic solvents or chemical products that are harmful to health and can cause intoxication due to the toxic fumes released during spraying. It is therefore **OBLIGATORY** to take the following precautions:

- CAREFULLY read the technical cards of the products to be used before use.
- Use the paint spray gun **ONLY** in adequately ventilated or aerated rooms or areas.
- ALWAYS wear adequate safety clothing for the protection of the body during use.
- ALWAYS wear gloves, goggles and a face-mask with active carbon filters in order to avoid the risks caused by toxic fumes or contact with the paint products and solvents by the skin and eyes

##### RISKS OF FIRE AND EXPLOSION



Many paint products contain highly inflammable organic solvents or chemical products; therefore, the paint spray gun must be used **ONLY** in adequately ventilated or aerated areas

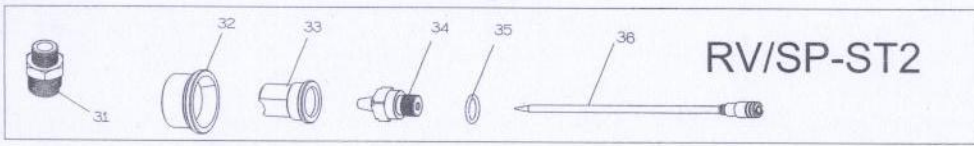
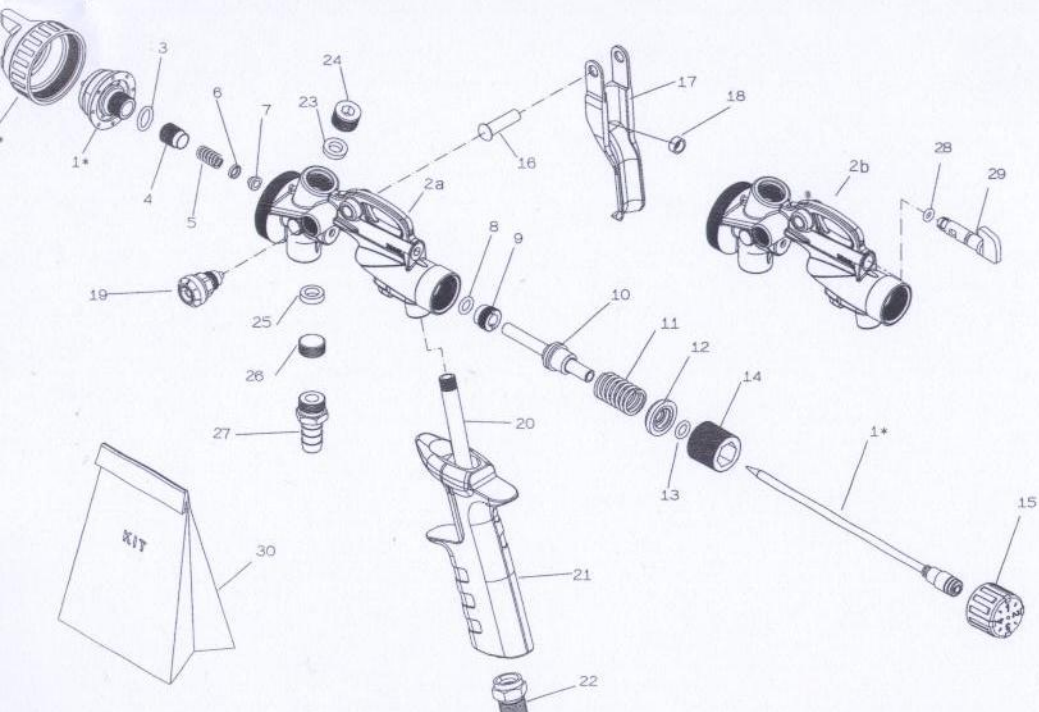
- Avoid all actions that might trigger fires, such as smoking, create sparks, or raise electrical risks of any kind.
- DO NOT utilise HALOGEN-TYPE HYDROCARBON SOLVENTS (1,1,1 TRICHLOROMETHYL OR TRICHLOROETHYLENE, etc.) because they can trigger chemical reactions with some of the materials in the paint spray gun and create the risk of dangerous explosions.
- Make sure that all the paint and solvent products used are compatible by cross-checking the respective product technical safety cards.
- Ground both the spray painting machine and the object to be painted in order to reduce the risk of sparks caused by static electricity.

##### OTHER RISKS

- IT IS FORBIDDEN to use the paint spray gun for the spraying of food or medical products
- IT IS FORBIDDEN to use the pistol in areas where machines ry such as conveyor belts, robots, etc. are working

##### INSTALLATION

For safe operation and correct maintenance, the paint spray gun must be used only by an operator who has been provided with the adequate preparation. Make sure that the compressed air system that supplies air to the paint spray gun always supplies air that has been filtered free of impurities, moisture and oil. After removing the paint spray gun from the packaging, make sure that no damage has occurred during shipping.



RV/SP-ST2

**DATI TECNICI - TECHNISCHE DATEN - TECHNICAL DATA - CARACTERISTIQUES TECHNIQUES - DATOS TECNICOS - DADOS TÉCNICOS - TECHNISCHE ÚDAJE - TEKNISCHE DATA - ΤΕΧΝΙΚΑ ΧΑΡΑΚΤΗΡΙΣΤΙΚΑ - MŰSZAKI ADATOK - TECHNISCHE GEVEGENS - TEKNISCHE DATA - ТЕХНИЧЕСКИЕ ДАННЫЕ - DATE TEHNICE - DANE TECHNICZNE - TEKNISKA DATA - TEKNISET TIEDOT - TEHNILISED ANDMED - TEHNISKIE DATI - TEHNICNI PODATKI - TECHNINIAI DUOMENYS - TECHNICKÉ ÚDAJE - INFORMAZIONI TEKNICA**

		RV				RV - HVLP			
<b>Pressione di lavoro</b>		da		a		da		a	
Arbeitsdruck	Work pressure	von	from	bis	to	von	from	bis	to
Pression de service	Presión de trabajo	de	de	à	a	de	de	à	a
Pressão de trabalho	Provozní tlak	de	od	a	a	de	od	a	a
Arbejdstryk	Πίεση εργασίας	fra	azó	til	éως	fra	azó	til	éως
Működési nyomás	Bedrijfsdruk	től	van	ig	tot	től	van	ig	tot
Arbeidstrykk	Рабочее давление	fra	or	til	ao	fra	or	til	ao
Presiune de funcționare	Natężenie robocze	de la	od	pină la	do	de la	od	pină la	do
Arbetsstryck	Toimintapaine	från	mistä	tiill	mihin	från	mistä	tiill	mihin
Töörihk	Darba spiediens	alates	no	kuni	līdz	alates	no	kuni	līdz
Delovni tlak	Darbo slėgis	od	nuo	do	iki	od	nuo	do	iki
Pracovný tlak	Pressa	od	minn	do	sa	od	minn	do	sa
<b>Consumo d'aria</b>		da		a		da		a	
Luftverbrauch	Air consumption	von	from	bis	to	von	from	bis	to
Consummation d'air	Consumo de aire	de	de	à	a	de	de	à	a
Consumo de ar	Spotřeba vzduchu	de	od	a	do	de	od	a	do
Luftförbruk	Κατανάλωση αέρα	fra	azó	til	éως	fra	azó	til	éως
Levegő felhasználás	Luchtverbruik	től	van	ig	tot	től	van	ig	tot
Luftforbruk	Расход воздуха	fra	or	til	ao	fra	or	til	ao
Consum de aer	Zużycie powietrza	de la	od	pină la	do	de la	od	pină la	do
Luftförbrukning	Iltankulutus	från	mistä	tiill	mihin	från	mistä	tiill	mihin
Õhu kulu	Gaisa patēriņš	alates	no	kuni	līdz	alates	no	kuni	līdz
Uporaba zraka	Oro sunaudojimas	od	nuo	do	iki	od	nuo	do	iki
Spotřeba vzduchu	Konsum ta' l-Arja	od	minn	do	sa	od	minn	do	sa
<b>Peso Netto</b>									
Nettogewicht	Net Weight								
Poids net	Peso Neto								
Peso Líquido	Váha netto								
Nettovægt	Καθαρό βάρος								
Nettovekt	Bec Netto								
Greutate Neto	Ciegaro netto								
Nettovikt	Nettopaino								
Nettokaal	Neto svars								
Neto teža	Svoris Neto								
Hmotnosť Netto	Toqol								
<b>Dimensioni</b>									
Dimensiones	Dimensiones	Abmessungen		Dimensions					
Mål	Διαστάσεις	Dimensões		Rozměry		mm		165 x 175	
Mål	Размеры	Mérlet		Wymiary					
Mått	Mitat	Dimenziuni		Gabarütü					
Mere	Ísmatavimai	Rozměry		Dimenzjoni					

Pos.	RV	RV - HVLP	RV - SP
1 a	∅1.0 BH088104	--	BH088955
1 b	∅1.2 BH088105	BH089569	BH088956
1 c	∅1.5 BH088106	BH089570	BH088957
1 d	∅1.8 BH088129	BH089571	BH088958
1 e	∅2.0 BH088107	BH089572	BH088959
1 f	∅2.5 BH088108	BH089642	BH088960
1 g	∅3.0 BH088109	--	BH088961
1 h	∅3.5 BH088110	--	BH088962
27	--	--	BS088245

Pos.	RV/SP-ST2
31	AS030905
32	BU088311
33	BT088310
34	BT088312
35	BD088198
36	BH088480

30	BH088189	RV/I
	BH088534	RV/S

Pos.	RV 1/4 Gas	RV 3/8 Gas
2a	BH089002	BH138396
2b	BH138395	BH138397
23	BE088732	BC088081

Pos.	RV 1/4 Gas	RV 3/8 Gas
24	BS088536	BS088913
28	BD089750	BD089750
29	BS089686	BS089686

Pos.	RV/I&RV/S
3	BD088198
4	BS088775
5	BA088773
6	BS088774
7	BC088765
8	BD088082

Pos.	RV/I&RV/S
9	BS088084
10	BH088165
11	BA108014
12	BS088085
13	BD088086
14	BS088118

Pos.	RV/I&RV/S
15	B1088114
16	BF088243
17	BL088092
18	BS088195
19	BH088060
20	BT088093

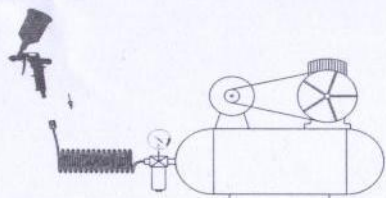
Pos.	RV/I&RV/S
21	BE088563
22	BS088094
25	BE088732
26	BS088238

Dimensioni	Dimensiones	Abmessungen	Dimensions		
Dimensiones	Διαστάσεις	Dimensões	Rozměry	mm	165 x 175
Mål	Размеры	Mérlet	Wymiary		
Mått	Mitat	Dimenziuni	Gabarütü		
Mere	Ísmatavimai	Rozměry	Dimenzjoni		

MAXIMA PRESSIONE D'ESERCIZIO	MAXIMUM WORKING PRESSURE
MAX. BETRIEBSDRUCK	MAXIMA PRESSION DE FUNCIONAMIENTO NORMAL
PRESSION DE SERVICE MAXIMALE	MAXIMÁLNÍ PROVOZNÍ TLAK
PRESSÃO MÁXIMA DE FUNCIONAMENTO	ΜΕΓΙΣΤΗ ΠΙΕΣΗ ΕΡΓΑΣΙΑΣ
MAKSIMALE ARBEJDSTRYK	MAXIMALE BEDRIJFSDRUK
MŰKÖDÉSI MAXIMÁLIS NYOMÁS	ΜΑΚΣΙΜΑΛΪΗΟ ΡΑΒΟΧΕΕ ΔΑΒΛΗΝΗΕ
MAKS. ARBEIDSTRYKK	MAKSIMALNE NATEŻENIE EKSPLOATACYJNE
PRESIUNE MAXIMĂ DE FUNCIONARE	ENIMMÄISTOIMINTAPAINE
MAXIMALT DRIFTSTRYCK	MAKSIMÁLAIS DARBA SPIEDIENS
MAKSIMAALNE KASUTATA RÕHK	MAKSIMALUS EKSPLOATACIJOS SLĖGIS
MAKSIMALNI DELOVNI TLAK	MAXIMÁLNÝ PŘEVÁŽKOVÝ TLAK
MAXIMÁLIS PREVÁŽKOVÝ TLAK	

**4 bar**  
**58 psi**

N.B.: Massimo livello di rumorosità: a 0,5 mt (20 inch) posteriore 75 dBA, a 1 mt (40 inch) laterale 79 dBA.  
 N.B.: Schallpegel max.: im Abstand von 0,5 m (20 inch) rückwärtig 75 dBA, im Abstand von 1 m (40 inch) seitlich 79 dBA.  
 N.B.: Maximum operating noise level: at 0,5 m (20 inches) rear 75 dBA, at 1 m (40 inches) lateral 79 dBA.  
 Nota: Niveau de bruit maximum : à 0,5 m arrière 75 dBA, à 1 m latéral 79 dBA.  
 N.B.: Máximo nivel de ruido: a 0,5 m (20 inch) posterior 75 dBA, a 1 m (40 inch) lateral 79 dBA.  
 N.B.: Nivel máximo de emissão sonora: a 0,5 m (20 inch) posterior 75 dBA, a 1 m (40 inch) lateral 79 dBA.  
 POZN.: Maximální hladina hluku: ve vzdálenosti 0,5 m (20 inch) zezadu 75 dBA, ve vzdálenosti 1 m (40 inch) z boku 79 dBA.  
 N.B.: Maksimale støjniveau på 0,5 m (20 tommer) bagud 75 dB (A), på 1 m (40 tommer) til siden 79 dB (A).  
 ΣΗΜΕΙΩΣΗ: Μέγιστη στάθμη θορύβου: στο 0,5 μ. (20 ίντσες) και από πίσω, 75 dBA, στο 1 μ. (40 ίντσες) και πλευρικά, 79 dBA.  
 Jól jegyezze meg: Maximális zajszint hátul 0,5 méternél (20 inch) 75 dBA, oldalon 1 méternél (40 inch) 79 dBA.  
 N.B.: Max. geluidsniveau: op 0,5 m (20 inch) achter 75 dBA, op 1 m (40 inch) zijwaarts 79 dBA.  
 N.B.: Maks. støjnivå: på 0,5 mt (20") bak 75 dBA, på 1 mt (40") på siden 79 dBA.  
 ПРИМЕЧАНИЕ: Максимальный шумовой уровень: при 0,5 м (20 дюйм) сзади 75 дБА, при 1 м (40 дюйм) сбоку 79 дБА.  
 N.B.: Nivel maxim de zgomot : la 0,5 metri (20 inch) posterior 75 dBA, la 1 metru (40 inch) lateral 79 dBA.  
 N.B.: Maksymalny poziom głośności: w odł. 0,5 m (20 cal.) z tyłu 75 dBA, w odł. 1 m. (40 cal.) z boku 79 dBA.  
 OBS: Maximal hláďina hluku: 0,5 m (20 inch) bakom 75 dBA, 1 m (40 inch) vid sidan 79 dBA.  
 Huomio: Max. melutaso: 0,5 m:ssä(20") takana 75 dBA, 1m:ssä sivussa 79 dBA  
 N.B.: Maksimaalne mürutasete: 0,5 mt (20 tolli) tagapool 75 dBA, 1 mt (40 tolli) küljel 79 dBA  
 ΠΙΕΣΙΜΕ: Μάξισμάλς τρόκλας ίίμενις: 0,5 m (20 collu) aizmugurē 75 dBA, 1 mt (40 collu) sāgus 79 dBA  
 Pripomba: Maksimálna stopnja hrupa: od 0,5 mt (20 inč) ozadi 75 dBA, od 1 mt (40 inč) bočen 79 dBA.  
 PASTABA: Maksimalus triukšimo lygis: 0,5 m (20 inch), apatėje - 75 dBA, 1 m (40 inch), šone - 79 dBA.  
 N.B.: Maximálna hladina hluku: pri 0,5 m (20 inch) zadná 75 dBA, pri 1 m (40 inch) bočná 79 dBA.  
 N.B. G L-ghola livell ta' hoss G sa distanza ta' 0,5 metru (20 inch) fuq wara 75 dBA, sa distanza ta' metru (40 inch) mal-ġenb 79 dBA.



- Connect the compressed air supply hose to the connector on the paint spray gun
- Clean the paint spray gun's ducts with solvent.
- Connect the paint material tank to the connector on the paint spray gun,
- Perform a test spraying to adjust the spray of product using the flow regulator

### OPERATION

1. Keep a distance of 150 – 250 mm (6-10 inc.) between the paint spray gun and the surface to be painted.
2. In order to obtain a uniform finish during painting, keep the paint spray gun perpendicular and at a constant distance from the surface to be painted.
3. Spray the paint in horizontal swatches. If the finish is not adequate, make sure that the pressure is not too low and that the paint spray gun is not being held too far from the surface to be painted.

### CLEANING OF THE PAINT SPRAY GUN

#### WARNING

Make sure to discharge all the air from the paint spray gun and disconnect the paint spray gun from the compressed air delivery hose before performing any cleaning operations.

**NEVER** allow the inflation gun to be serviced by personnel without adequate training and instruction..






**NEVER** use non-original spare parts for maintenance.



If a pause of only a few minutes will be left at the end of working, the machine can be left without cleaning; if a pause of a few hours will pass between one working and another, the paint spray gun must be cleaned in order to prevent the paint from drying inside the ducts.

1. Add clean, good quality solvent to the tank, and then pull the trigger to clean the internal paint spray gun's passages from all traces of paint before proceeding to disassembly.
2. Always disconnect the paint spray gun from the compressed air hose and discharge any residual pressure inside before proceeding to disassembly.
3. Unscrew and remove the paint spray gun's head, submerge it in solvent and brush it clean. Do not use metal objects for cleaning.
4. After removing the needle, unscrew the nozzle using the respective wrench, insert it in solvent and brush it clean. Wash the inside of the paint spray gun and brush it clean; do not submerge it completely in the solvent.
5. The outside of the body must be cleaned with a clean cloth dipped in solvent.
6. Lubricate the moving parts with grease or vaseline from time to time (DO NOT USE LUBRICANTS THAT CONTAIN SILICONE).

### MALFUNCTIONS – CAUSES AND SOLUTIONS

Fan type	Cause	Solution
Intermittent spray	 Presence of air in the paint circuit	<ul style="list-style-type: none"> <li>• Tighten the nozzle using the wrench provided</li> <li>• Make sure that the tank is not empty</li> <li>• Check that the connecting hole is not obstructed</li> <li>• Tighten the gland screw or replace the gasket if worn</li> </ul>
Poor atomisation. Spray concentrated into the centre	 The flow of paint is greater than the pressure and quantity of air supplied	<ul style="list-style-type: none"> <li>• Reduce the flow of paint using the rear flow regulator</li> <li>• Make sure that the paint is not too dense and dilute if necessary</li> </ul>
Excessive atomisation. Lack of spray in the centre	 The pressure and the quantity of air are greater than the flow of paint	<ul style="list-style-type: none"> <li>• Reduce the quantity of air and increase the flow of paint</li> </ul>
Uneven fan shape	 There is a residue of material in the holes of the wings that obstructs the passage of material. The nozzle is dirty or malfunctioning. The atomisation cap is dirty or damaged.	<ul style="list-style-type: none"> <li>• Submerge the head in solvent</li> <li>• Clean and open all closed holes with a jet of compressed air or a wooden spike</li> <li>• It is inadvisable to use pointed metal objects in order not to deform the hole of the head part</li> </ul>
Uneven fan shape	 This defect is caused by deformation between the nozzle and the head	<ul style="list-style-type: none"> <li>• Clean the head and the nozzle</li> <li>• Make sure that the centring between the two is precise</li> <li>• Check that the tip of the pin is not ruined</li> <li>• Replace the nozzle and the head</li> </ul>

### PLACING THE PAINT SPRAY GUN OUT OF SERVICE PLACING THE PAINT SPRAY GUN OUT OF



In order to place the paint spray gun out of service, it must be first cleaned of every trace of solvent and liquid paint. The paint spray gun's construction materials are completely recyclable but must be divided according to type and eliminated using the respective collection centres.