

Air Filters & Regulators



SEL.62

Spray Gun Oil And Water Separator

- Removes oil and water at spray gun air inlet
- Standard 1/4" BSP thread
- Clear case allows easy viewing
- Lightweight, only 100 g
- Packed in blister pack

Order No.	Description
SEL.62	Cormack Spray Gun Oil and Water Separator



LFR.101

Garage Filter Regulator

- Economic DIY filter regulator
- Ideal for portable compressors
- Filtration - 40 microns
- Air flow - 425 l/min (15 cfm)
- Manual drain
- Inlet outlet - 1/4" BSP
- Complete with mounting bracket and gauge

Order No.	Description
LFR.101	Cormack Filter Regulator
LFR.100.09	Filter Element for LFR 100/101
LFR.101.14	Bowl for LFR101
LFR.100.13	Drain Assembly for LFR100/101
LFR.100.14	Gauge for LFR100/101



RR.AS



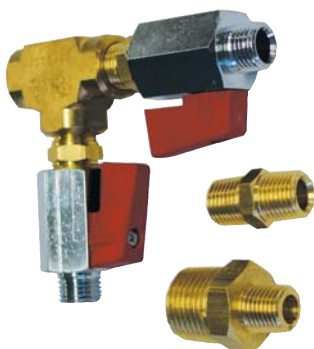
94705500

Anest Iwata Double Outlet Filter Regulator

- Sintered alloy filter
- Double outlet for two hoses
- Alloy bowl
- Filtration - 5 microns
- Air flow - 780 l/min (28 cfm)
- Manual drain
- Inlet - 3/8" BSP
- Outlet - 1/4" BSP x 2
- Comes with gauge and mounting bracket

Order No.	Description
RR.AS	Anest Iwata Filter Regulator
94705500	Diaphragm RR.AS

ACCESSORIES



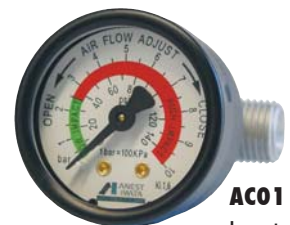
TF4.2
Double Outlet
Kit



DR5
Spray Gun
Regulator with
Gauge



DR8



ACO1
Impact
Controller