

SGA100

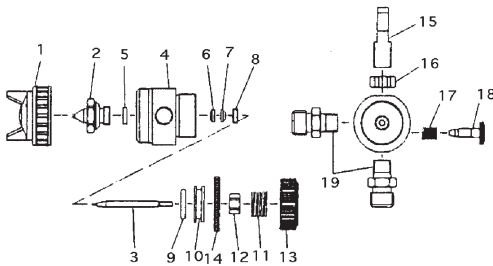
Compact Automatic Spray Gun



- High transfer efficient, greater than 65% on the job
- Less overspray = less wastage
- Even paint coverage
- Fast operation
- Quick response shut off valve
- Stay cleaner air caps
- Teflon needle packing
- Ideal for waterborne materials



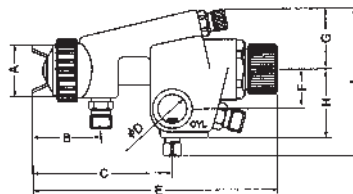
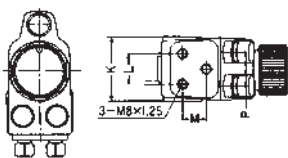
PARTS LIST



Item No.	Part No.	Description
1	93803611	Air Cap Set E1
2	93044980	Fluid Nozzle
3	93060980	Fluid Needle
4		Gun Body
5	93902980	Packing 1 (2 pcs)
6-7	93900980	Fluid Needle Packing Set
8	93093160	Air Valve Packing Seat
9	93903980	O Ring (2 pcs)
10	93220980	Piston

Item No.	Part No.	Description
11	93223980	Spring
12	93091980	Nut
13	93105980	Fluid Adjustment Knob
14	93229981	Nut
15	93240981	Bolt
16	93213981	Hexagon Nut
17	93248980	Spring
18	93120981	Spread Adjustment Valve
19	94013152	Joint

LPH200122P	MAIN APPLICATION Industrial & Furniture
✓	Mould Release
✓	Ink
✓	Stain
	Lacquer - Furniture
	Enamel
	Polyurethane/Urethane
	Two Pack - Medium Solids
	Two Pack - High Solids
	Contact Adhesive
	Ceramic Enamels
	Epoxies
	Zinc
●	Etch Primer
	Primer Surfacer
	High Build Primer
	Paint Viscosity (Ford Cup #4)
✓	< 18 sec
	18 - 26 sec
	26 - 33 sec
✓	- Ideal for this material application
●	- Suitable for this material application

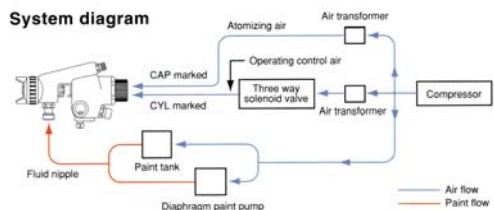


Fixing Dimensions (mm)

Model	A	B	C	D	φ	E	F	G	H	J	K	L	M	P
SGA100	27	-	34	10	55.5	34				75	58.5			

SGA: position to attach gun stay differs from the above drawings

System diagram



TECHNICAL

Order No.	Description	Fluid Nozzle Size mm	Air Pressure @Gun Inlet bar (psi)	Air Consumption l/min (cfm)	Fluid Output ml/min	Fan Pattern mm	Weight g	Air Cap
SGA100	Automatic spray gun	1.0	2.5 (36)	80 (2.8)	95	130	270	E1