



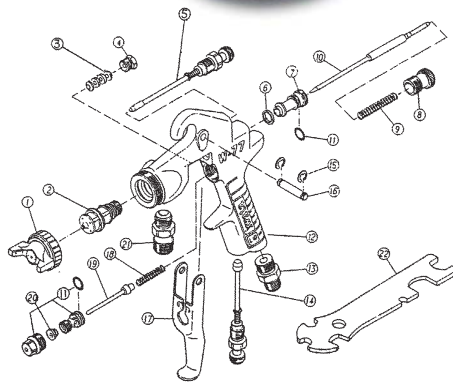
# W-77

## Suction & Pressure Feed Spray Guns

- A well-balanced general purpose spray gun
- Built-in air adjuster
- Comfortable to use
- High atomization air caps available: 11, 12, and 21
- Excellent manoeuvrability
- Medium to large paint jobs



### PARTS LIST



Item No.	Part No.	Description
1	93901911	Air cap set-0 (pressure 1.2 mm)
1	93900901	Air cap set-1 = 1.5 mm
1	93901901	Air cap set-2 = 2.0 mm
1	93900911	Air cap set-3 = 2.5 mm
1	93902911	Air cap set-11 = 1.5 mm
1	93916901	Air cap set-12 = 1.5 mm
1	93902901	Air cap set-21 = 2.0 mm
2	93040910	Fluid Nozzle-0 = 1.2mm
2	93040900	Fluid Nozzle-1 = 1.5mm
2	93041900	Fluid Nozzle-2 = 2.0mm
2	93042900	Fluid Nozzle-3 = 2.5mm

Item No.	Part No.	Description
3	93840150	# Needle packing set (Set of 2)
4	93067900	Needle packing seat
5	93909900	Spreader Adj. valve set
5	93908900	Spreader Adj. valve set (not available)
	93908100	# Gasket (Pack of 2)
6	93064900	Fluid needle. Guide
7	93102081	Fluid adj. knob
8	93069081	Fluid needle spring
9	93904910	Fluid needle set-0 = 1.2mm
10	93904900	Fluid needle set-1 = 1.5mm
10	93905900	Fluid needle set 2 and 21 = 2mm
10	93906900	Fluid needle set-3 = 2.5mm
11		O-ring (2) see Item 23 93906100
12	93000901	Gun Body
13	93160001	Air hose joint
14	93907900	Air adj. valve set
15	93842240	# Stop ring (Pack of 2)
16	93167041	Trigger stud
17	93162900	Trigger
18	93088050	Air valve spring
19	93081900	Air valve
20	93930900	Air valve seat set
20-3	93083901	Air valve seat
20-2	93909101	# Packing-air valve (Pack of 2)
21	93161901	Fluid nipple suction
22	93280901	Spanner
23	93906100	# W77 O-ring set (5-1, 11)
	W77.RSK	Reservice kit Includes items #

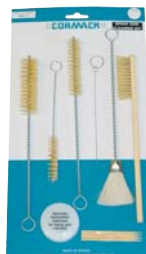
	W77.0	W77.11C	W77.12C	W77.2C	W77.21C	W77.3C	MAIN APPLICATION Auto-Refinish Industrial/Furniture
	✓	✓	●				<b>Material Type</b>
				✓	●		Etch Primer
				●	●	✓	Primer - 1K
						●	Filling Primer - 2K
						●	Spray Putty
✓	●	✓					Stain
			●	●	✓		Lacquer - Furniture
				●	✓		Acrylic Lacquer
●		✓	●				Enamel - Air Dry
✓	●	✓					Polyurethane/Urethane
●	●	✓					Top Coat Solid Colour - 2K
●	●	●					Base Coat - 2K
							Base Coat - Waterborne
			✓				Clear Coat - 2K
			✓		●		High Solids - 2K (80-85%)
				✓	●		Contact Adhesive
			●	●	✓	●	Epoxy
				●	✓		High Build Epoxy
				●	✓		Zinc
				●	✓		Chlorinated Rubber
							<b>Paint Viscosity (Ford Cup #4)</b>
●							< 18 sec
	●	●	●	●	●		18 - 26 sec
					●	●	26 - 33 sec

- ✓ - Ideal for this material application
- - Suitable for this material application

### ACCESSORIES



**015001**  
Super Lube



**SEL.11**  
Spray Gun  
Cleaning  
Kit



**DR5**  
Spray Gun  
Regulator  
with  
Gauge



**SEL.5**  
Spray Gun  
Filters



**LA.1000**  
700 ml  
Metal Pot

### TECHNICAL

Order No.	Description	Fluid Nozzle Size mm	Air Pressure @Gun Inlet bar (psi)	Air Consumption l/min (cfm)	Fluid Output ml/min	Fan Pattern mm	Air Cap No.
<b>W77.0</b>	Pressure spray gun head only	1.2	3.5 (50)	430 (15.2)	480	445	0
<b>W77.11C</b>	Spray gun & PCL.10B.3 1 litre pot	1.5	3.5 (50)	290 (10.2)	255	260	11
<b>W77.12C</b>	Spray gun & PCL.10B.3 1 litre pot	1.5	3.5 (50)	370 (13.1)	255	230	12
<b>W77.2C</b>	Spray gun & PCL.10B.3 1 litre pot	2.0	3.5 (50)	250 (8.8)	345	255	2
<b>W77.21C</b>	Spray gun & PCL.10B.3 1 litre pot	2.0	3.5 (50)	340 (12)	350	270	21
<b>W77.3C</b>	Spray gun & PCL.10B.3 1 litre pot	2.5	3.5 (50)	325 (11.5)	435	280	3