

W100

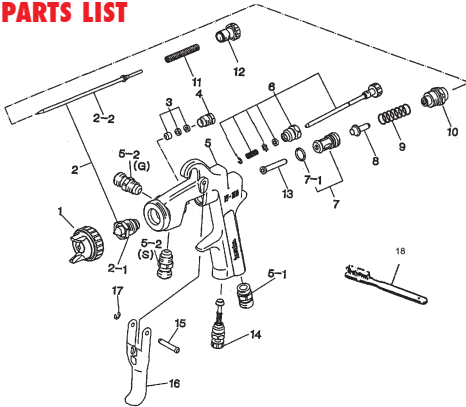
Compact Pressure Spray Gun



- High Transfer Efficient - greater than 65% paint on the job
- High atomization
- Even paint coverage - fast operation
- Light weight - ergonomic design
- Gun head weighs only 320 g
- Ideal for waterborne materials
- Easy clean body
- Small to medium paint jobs



PARTS LIST



Item No.	Part No.	Description
1	93810611	Air Cap Set E2P (082, 102, 132, 152)
1A	93576530 #	Air Cap Cover Ring - Black
1B	93608320 #	Cap Packing - White
2+2-1	93887610	Pressure Nozzle Needle Set 0.8mm
2+2-1	93888610	Pressure Nozzle Needle Set 1.0mm
2+2-1	93801610	Pressure Nozzle Needle Set 1.3mm
2+2-1	93807610	Pressure Nozzle Needle Set 1.5mm
3	93834530 #	Needle Packing Set
4	93581531	Needle Packing Seat
5	93802610	Body Set, Suction/Pressure
5	93812610	Body Set, Gravity
5-1	93660300	Air Hose Joint
5-2	93584530	Fluid Nipple

Item No.	Part No.	Description
6	93842531	Fan Pattern Adjust Set
7	93843530	Air Valve Seat Set
7-1	96638008 #	O Ring
8	93591530	Air Valve
9	93719530	Air Valve Spring
10	93844531	Fluid Adjust Guide
11	93593530	Fluid Needle Spring
12	93594532	Fluid Adjust Knob
13	93595530	Air Valve Shaft
14	93845531	Air Adjust Set
15	93667360	Trigger Stud
16	93597530	Trigger
17	93912030 #	E Stopper (pkt 2)
18	96990600	Brush
	K100	Spanner
	W100RSK	W100 & LP100 Reservice Kit includes items with #

ACCESSORIES



Paper Strainers
PSF50/250 - Fine
PSM50/250 - Medium

W100082P	W100102P	W100132P	W100152P	MAIN APPLICATION Industrial/Furniture
●	✓	●	●	Material Type
		✓	●	Etch Primer
			●	Primer - 1K
				Filling Primer - 2K
				Spray Putty
●	✓	●	●	Stain
		●	✓	Lacquer - Furniture
			✓	Acrylic Lacquer
		✓		Enamel - Air Dry
●				Polyurethane/Urethane
	✓	●		Top Coat Solid Colour - 2K
		✓		Base Coat - 2K
●				Base Coat - Waterborne
		✓	●	Clear Coat - 2K
		●		High Solids - 2K (80-85%)
✓				Contact Adhesive
		●		Epoxy
✓				High Build Epoxy
		●		Zinc
		●		Chlorinated Rubber
				Paint Viscosity (Ford Cup #4)
				< 18 sec
				18 - 26 sec
				26 - 33 sec
				✓ - Ideal for this material application ● - Suitable for this material application

Order No.	Description	Fluid Nozzle Size mm	Air Pressure @Gun Inlet bar (psi)	Air Consumption bar (psi)	Fluid Output l/min (cfm)	Fan Pattern ml/min	Air Cap No.
W100082P	Compact spray gun head only	0.8	2.5 (36)	270 (9.5)	150	190	E2P
W100102P	Compact spray gun head only	1.0	2.5 (36)	270 (9.5)	200	220	E2P
W100132P	Compact spray gun head only	1.3	2.5 (36)	220 (7.8)	200	210	E2P
W100152P	Compact spray gun head only	1.5	2.5 (36)	220 (7.8)	250	240	E2P