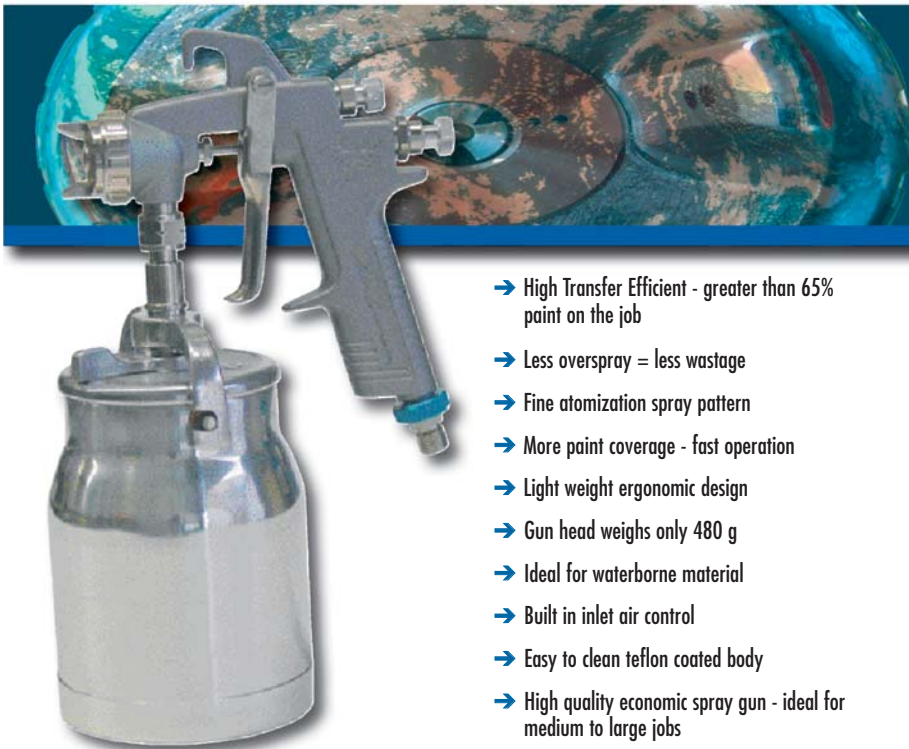


# AZ10HTE

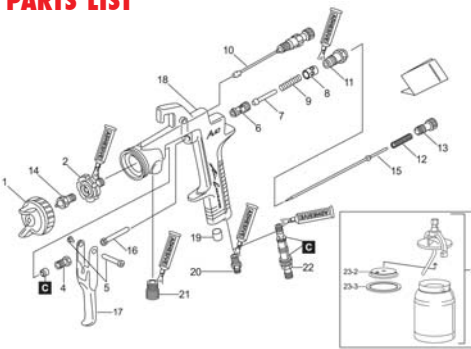
## Suction Feed Spray Gun



- High Transfer Efficient - greater than 65% paint on the job
- Less overspray = less wastage
- Fine atomization spray pattern
- More paint coverage - fast operation
- Light weight ergonomic design
- Gun head weighs only 480 g
- Ideal for waterborne material
- Built in inlet air control
- Easy to clean teflon coated body
- High quality economic spray gun - ideal for medium to large jobs

**Air-Gun**

### PARTS LIST



Item No.	Part No.	Description
5	2COM4001	Trigger Stud
7	2COM2004	Air Valve
8	2COM3006	Bushing
9	2COM6001	Air Valve Spring
10	2PAT10AG	Pattern Adj Set
11	2SUB3012	Fluid Needle Guide
12	2COM6002	Needle Spring
13	2COM3007	Fluid Needle Adj
14 & 15	2ADU14AG10	Need / Nozz 1.0 mm
14 & 15	2ADU14AG13	Need / Nozz 1.3 mm
14 & 15	2ADU14AG15	Need / Nozz 1.5 mm
14 & 15	2ADU14AG18	Need / Nozz 1.8 mm
14 & 15	2ADU14AG20	Need / Nozz 2.0 mm
14 & 15	2ADU14AG25	Need / Nozz 2.5 mm
14 & 15	2ADU10AG30	Need / Nozz 3.0 mm
16	2COM4000	Air Valve Shaft
17	2COM6004	Trigger
20	2COM5000	Air Nipple
22	2SUB6007	Air Control Valve
23	LA.1000	Suction Pot
23-2	LA.1000D	Dripless Insert 2 pk
23-3	94904310	Lid Packing 2 pk
C	AZ10RSK	Service Kit

	AZ10HTE13C	AZ10HTE15C	AZ10HTE18C	AZ10HTE20C	AZ10HTE25C	AZ10HTE30C	MAIN APPLICATION Furniture Industry Auto/Industrial
	●	✓					<b>Material Type</b>
			✓	●			Etch Primer
				✓	●		Primer - 1K
				✓	●		Filling Primer - 2K
					●		Spray Putty
✓	●						Stain
			✓	●			Lacquer - Furniture
			●	✓	●		Acrylic Lacquer
●	✓						Enamel - Air Dry
✓	●						Polyurethane/Urethane
●	✓						Top Coat Solid Colour - 2K
●	✓						Base Coat - 2K
✓	●						Base Coat - Waterborne
●	✓						Clear Coat - 2K
	✓	●					High Solids - 2K (80-85%)
			●	✓	●		Contact Adhesive
				✓	●		Epoxy
					✓	●	High Build Epoxy
					✓	●	Zinc
					●	✓	Chlorinated Rubber
							<b>Paint Viscosity (Ford Cup #4)</b>
●	●						< 18 sec
			●	●	●		18 - 26 sec
					●	●	26 - 33 sec

- ✓ - Ideal for this material application
- - Suitable for this material application

### ACCESSORIES



**015001**  
Super Lube



**SEL.11**  
Spray Gun  
Cleaning  
Kit



Paper Strainers  
**PSF50/250** - Fine  
**PSM50/250** - Medium



**DR5**  
Spray Gun  
Regulator with  
Gauge



**SEL.5**  
Spray Gun Filters

Order No.	Description	Fluid Nozzle Size mm	Air Pressure @Gun Inlet bar (psi)	Air Consumption l/min (cfm)	Fluid Output ml/min	Fan Pattern mm
<b>AZ10HTE13C</b>	Spray gun & LA.1000 1 litre pot	1.3	2.5 (36)	210 (7.4)	140	180
<b>AZ10HTE15C</b>	Spray gun & LA.1000 1 litre pot	1.5	2.5 (36)	210 (7.4)	190	190
<b>AZ10HTE18C</b>	Spray gun & LA.1000 1 litre pot	1.8	2.5 (36)	280 (9.8)	220	220
<b>AZ10HTE20C</b>	Spray gun & LA.1000 1 litre pot	2.0	2.5 (36)	280 (9.8)	250	250
<b>AZ10HTE25C</b>	Spray gun & LA.1000 1 litre pot	2.5	2.5 (36)	290 (10)	270	280
<b>AZ10HTE30C</b>	Spray gun & LA.1000 1 litre pot	3.0	2.5 (36)	290 (10)	290	290