

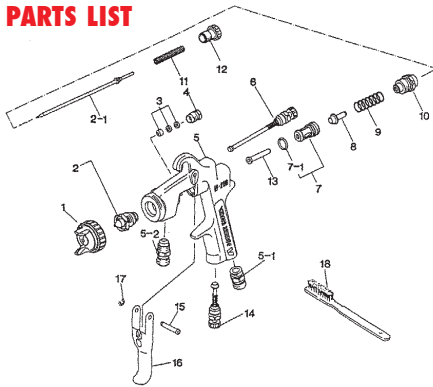
W200

Pressure Feed Spray Gun



- High Transfer Efficient - greater than 65% onto the job
- High atomization
- Even paint coverage - fast operation
- Light weight - ergonomic design
- Gun head weighs only 380 g
- Ideal for waterborne materials
- Easy cleaning
- Medium to large paint jobs
- Tungsten carbide setups available for the spraying of abrasive materials

PARTS LIST



Item No.	Part No.	Description
1	93830610	Air Cap Set LV2
1	93818611	Air Cap Set G2P(122)
1	93817611	Air Cap Set K1(151)
1	93816611	Air Cap Set K2(152, 182)
1	93815611	Air Cap Set R1(201)
1	93814611	Air Cap Set R2(202)
1	93813611	# Air Cap Set W1(251)
1A	93512600	# Air Cap Cover Ring - Black
1B	93708240	Air Cap Packing - White
2	93527610	Fluid Nozzle 1.2mm
2	93526610	Fluid Nozzle 1.5mm
2	93525610	Fluid Nozzle 1.8mm
2	93524610	Fluid Nozzle 2.0mm

Item No.	Part No.	Description
2	93523610	Fluid Nozzle 2.5mm
2-1	93829600	Fluid Needle 1.2mm
2-1	93830600	Fluid Needle 1.5mm
2-1	93831600	Fluid Needle 1.8, 2.0mm
2-1	93832600	Fluid Needle 2.5mm
2+2-1	93889610	Pressure Nozzle Needle Set 0.8mm
2+2-1	93890610	Pressure Nozzle Needle Set 1.0mm
2+2-1	93823610	Pressure Nozzle Needle Set 1.2mm
3	93834530	# Needle Packing Set
4	93581531	Needle Packing Seat
5	93826610	Body Set, Suction/Pressure
5-1	93660300	Air Hose Joint
5-2	93515600	Fluid Nipple
6	93840601	Fan Pattern Adjust Set
7	93843530	Air Valve Seat Set
7-1	96638008	# O Ring
8	93591530	Air Valve
9	93719530	Air Valve Spring
10	93844531	Fluid Adjust Guide
11	93593530	Fluid Needle Spring
12	93594532	Fluid Adjust Knob
13	93595530	Air Valve Shaft
14	93845531	Air Adjust Set
15	93667360	Trigger Stud
16	93517600	Trigger
17	93912030	# E Stopper (pkt 2)
18	96990600	Brush
	K100	Spanner

W200082LV2	W200102LV2	W200122LV2	W200082P	W200102P	W200122P	W200202P	W200251P	MAIN APPLICATION
✓	●	✓	✓	●	✓	✓	✓	Auto-Refinish Furniture/Industrial
								Material Type
								Etch Primer
						●	✓	Primer - 1K
						●	✓	Filling Primer - 2K
						●	✓	Spray Putty
●	●	✓	●	●	✓			Stain
●	✓		●	●	✓			Lacquer - Furniture
			✓			✓	●	Acrylic Lacquer
			✓					Enamel - Air Dry
●	✓		●	✓				Polyurethane/Urethane
								Top Coat Solid Colour - 2K
								Base Coat - 2K
								Base Coat - Waterborne
								Clear Coat - 2K
								High Solids - 2K (80-85%)
						●	✓	Contact Adhesive
						✓	●	Epoxy
						●	✓	High Build Epoxy
								Zinc
								Chlorinated Rubber
								Paint Viscosity (Ford Cup #4)
●	●	●	●	●	●			< 18 sec
●	●			●				18 - 26 sec
								26 - 33 sec

- ✓ - Ideal for this material application
- - Suitable for this material application

ACCESSORIES



015001
Super Lube



SEL.11
Spray Gun
Cleaning
Kit



6225052
Green 60 micron filter
6225100
Blue 120 micron filter
6225340
White 240 micron filter

622538
Inline Filter
Holder 3/8"
62251414
Inline Filter
Holder 1/4"



DR5
Spray Gun
Regulator with
Gauge



AC01
Impact Controller

TECHNICAL	Fluid Nozzle Size mm	Air Pressure @Gun Inlet bar (psi)	Air Consumption l/min (cfm)	Fluid Output ml/min	Fan Pattern mm	Air Cap No.	
W200082LV2	Spray gun head only	0.8	2.0 (28)	270 (9.9)	255	280	LV2
W200102LV2	Spray gun head only	1.0	2.0 (28)	270 (9.9)	255	280	LV2
W200122LV2	Spray gun head only	1.2	2.0 (28)	270 (9.9)	255	280	LV2
W200082P	Spray gun head only	0.8	3.0 (43)	560 (19.8)	500	400	G2P
W200102P	Spray gun head only	1.0	3.0 (43)	560 (19.8)	500	400	G2P
W200122P	Spray gun head only	1.2	3.0 (43)	560 (19.8)	500	400	G2P
W200202P	Spray gun head only	2.0	3.0 (43)	360 (12.7)	350	350	R2
W200251P	Spray gun head only	2.5	3.0 (43)	360 (12.7)	440	280	W1