

AZ40HTE

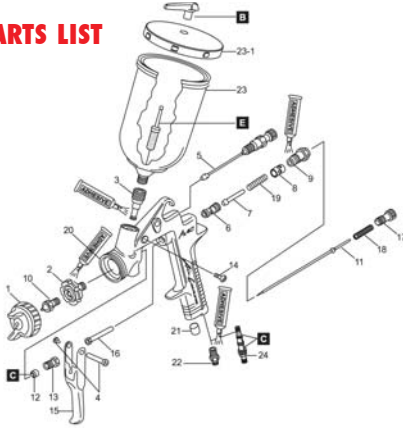
Centre Gravity Feed Spray Gun



- High Transfer Efficiency - greater than 65% paint on the job
- Less overspray = less wastage
- Fine atomization spray pattern
- More paint coverage - fast operation
- Light weight - ergonomic design
- Gun head weighs only 440 g
- Ideal for waterborne material
- Inlet air control
- Easy clean teflon coated body
- Ideal for touch up work in the auto refinsh industry

Air-Gunsa

PARTS LIST



Item No.	Part No.	Description
1	2CAP40AG08	Air Cap 0.8 mm
1	2CAP40AG10	Air Cap 1.0 mm
1	2CAP40AG12	Air Cap 1.2 mm
1	2CAP40AG15	Air Cap 1.5 mm
1	2CAP40AG18	Air Cap 1.8 mm
1	2CAP40AG20	Air Cap 2.0 mm
2	2COM3008	Nozzle Holder
3	4COM5003	Threaded Bushing
4	4COM4008	Trigger Stud

Item No.	Part No.	Description
5	2PAT40AG	Pattern Adjust Set
6	2SUB6006	Air Valve Seat Set
7	COM2004	Air Valve
8	2COM3006	Bushing
9	2SUB3012	Fluid Needle Guide
10 & 11	2ADU40AG08	Need / Nozz 0.8 mm
10 & 11	2ADU40AG10	Need / Nozz 1.0 mm
10 & 11	2ADU40AG12	Need / Nozz 1.2 mm
10 & 11	2ADU40AG15	Need / Nozz 1.5 mm
10 & 11	2ADU40AG18	Need / Nozz 1.8 mm
10 & 11	2ADU40AG20	Need / Nozz 2.0 mm
12	2COM2006	Needle Packing
13	2COM3011	Needle Packing Nut
14	2COM5004	Screw
15	2COM6004	Trigger
16	2COM4000	Air Valve Shaft
17	2COM3007	Fluid Needle Adjust
18	2COM6002	Needle Spring
19	2COM6001	Air Valve Spring
23	PCG.2AG	200 ml Gravity Cup
23-1	2013130600	Lid Set PCG.2AG
24	2SUB6007	Air Control Valve
B	2502800500	Non-Drip Set 5pk
C	AZ40RSK	Service Kit
E	SEL.30	Gravity Filter 5pk

	AZ40HTE08C	AZ40HTE10C	AZ40HTE12C	AZ40HTE15C	AZ40HTE18C	AZ40HTE20C	
	●	✓	●				MAIN APPLICATION Auto-Refinish - Industrial
				✓	●	●	Material Type
					✓	●	Etch Primer
						●	Primer - 1K
					✓	●	Filling Primer - 2K
							Spray Putty
	●	✓					Stain
			●	✓			Lacquer - Furniture
				✓	●		Acrylic Lacquer
			●	✓			Enamel - Air Dry
			●	✓	●		Polyurethane/Urethane
			●	✓			Top Coat Solid Colour - 2K
				✓	●		Base Coat - 2K
				✓	●		Base Coat - Waterborne
			●	✓			Clear Coat - 2K
					✓		High Solids - 2K (80-85%)
						●	Contact Adhesive
					●	●	Epoxy
						●	High Build Epoxy
							Zinc
							Chlorinated Rubber
							Paint Viscosity (Ford Cup #4)
	●	●	●				< 18 sec
				●	●	●	18 - 26 sec
					●	●	26 - 33 sec

✓ - Ideal for this material application
● - Suitable for this material application

ACCESSORIES



015001
Super Lube



SEL.11
Spray Gun
Cleaning
Kit



SEL.30
Paint Filters



PCG.6AG
600 ml
Nylon Pot



PCG.2AG
200 ml
Nylon Pot

Order No.	Description	Fluid Nozzle Size mm	Air Pressure @Gun Inlet bar (psi)	Air Consumption l/min (cfm)	Fluid Output ml/min	Fan Pattern mm
AZ40HTE08C	Spray gun & PCG.2AG 200 ml pot	0.8	2.5 (36)	130 (4.6)	60	100
AZ40HTE10C	Spray gun & PCG.2AG 200 ml pot	1.0	2.5 (36)	130 (4.6)	90	110
AZ40HTE12C	Spray gun & PCG.2AG 200 ml pot	1.2	2.5 (36)	130 (4.6)	120	130
AZ40HTE15C	Spray gun & PCG.2AG 200 ml pot	1.5	2.5 (36)	170 (6.0)	170	140
AZ40HTE18C	Spray gun & PCG.2AG 200 ml pot	1.8	2.5 (36)	200 (7.0)	210	150
AZ40HTE20C	Spray gun & PCG.2AG 200 ml pot	2.0	2.5 (36)	200 (7.0)	230	160