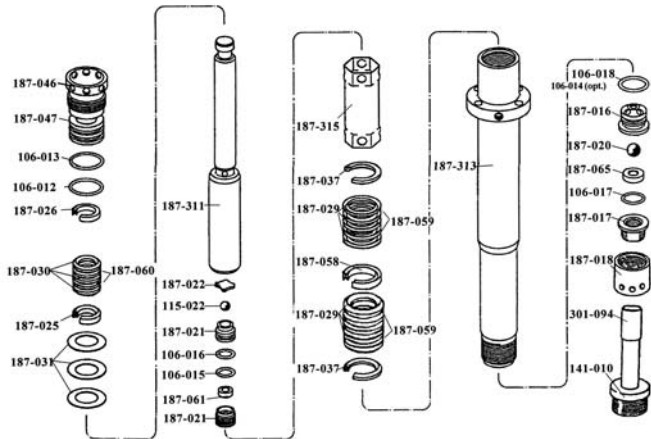


# Airlessco Slow Stroker Parts

## SL Fluid Pump

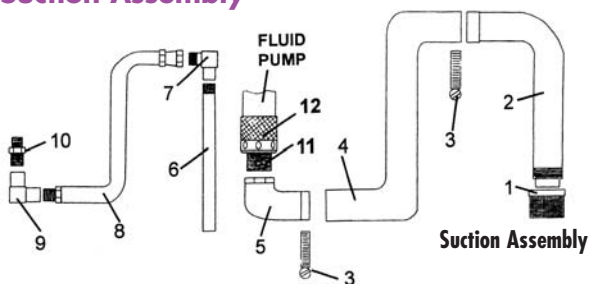
### PARTS LIST



Part No.	Description
106.012	* O-Ring
106.013	* O-Ring
106.014	* O-Ring
106.017	* O-Ring
106.018	* O-Ring
106.021	* ^ O-Ring
115.022	* Ball Tungsten Carbide 5/16"
141.010	Filter Basket
187.016	Suction Retainer
187.017	Suction Support Seat
187.018	Check Valve Nut
187.020	* Inlet Ball Valve
187.025	Male Gland
187.026	Female Gland
187.029L	Packings - Leather
187.029T	Packings - Teflon
187.030	Packings

Part No.	Description
187.031	Belleville Springs
187.037	Male Gland
187.046	Packing Nut
187.047	Packing Holder
187.051	^ Plug
187.058	Female Adapter
187.059	Packings
187.060	Packings
187.061	Tungsten Carbide Seat
187.062	^ Retainer
187.065TC	Seat Tungsten Carbide
187.313	Fluid Body Pump
187.315	Spacer
301.094	Suction Tube
187.330.99	Piston with parts marked ^
187.040	Packing Kit - includes parts marked *

## Suction Assembly



Ref	Part No.	Description
1	* 141.008	Inlet Strainer
2	* 301.514	Suction Tube
3	* 301.516	Hose Clamps (2)
4	* 301.513A	Hose Clamps (2)
5	* 100.165	Elbow
6	188.377	Return Pipe
6A	301.517	Suction Hose assembly - includes parts marked *
7	100.128	Elbow
8	100.012	Whip Hose
9	100.126	Elbow
10	100.385	Reducer
11	187.017	Fitting
12	187.018	Suction Nut

**301.364**  
Circuit Board  
Slow Stroker

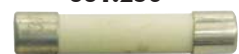


**331.294**  
Sensor Little Pro  
& Slow Stroker



**331.297**  
Potentiometer Little Pro  
& Slow Stroker

**331.256**



**331.165**



**331.152**

331.152 Fuse 8 Amp  
331.165 Fuse 12 Amp Slow Blow  
331.256 Fuse 15 Amp Slow Blow