



W300

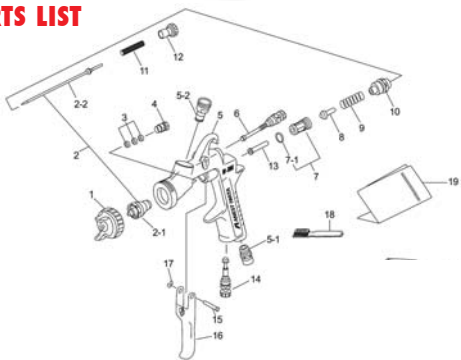
Body Shop Gold Spray Gun



- High Transfer Efficient - greater than 65% onto the job
- Less overspray = less wastage
- Fine atomization spray pattern
- More paint coverage - fast operation
- New lightweight ergonomic design
- Gun head weight only 320 g
- Perfect for waterborne materials
- Easy to clean chrome body
- Ideal for touch up work in auto refinsh industry



PARTS LIST



| Item No. | Part No. | Description |
|----------|----------|-----------------------------|
| 1 | 93635610 | Air Cap BP4 |
| 2.1 | 93501610 | Nozzle 1.3 mm |
| 2.2 | 93578530 | Needle 1.3 mm |
| 3 | 93834530 | Needle Packing Set |
| 4 | 93581531 | Needle Packing Seat |
| 5.1 | 93660300 | Air Nipple |
| 5.2 | 93575620 | Fluid Nipple |
| 6 | 93639620 | Pattern Adj Set W300 BPG |
| 7 | 93646610 | Air Valve Seat Set W300 BPG |
| 8 | 93591530 | Air Valve |

| Item No. | Part No. | Description |
|----------|----------|---------------------------|
| 9 | 93719530 | Air Valve Spring |
| 10 | 93644610 | Fluid Adjust Set W300 BPG |
| 11 | 93593530 | Fluid Needle Spring |
| 12 | 93594532 | Fluid Adj Knob |
| 13 | 93595530 | Air Valve Shaft |
| 14 | 93845531 | Air adjust set |
| 15 | 93667360 | Trigger Stud |
| 16 | 93597530 | Trigger |
| 17 | 93912030 | E Stopper (Pkt 2) |
| 18 | 96990600 | Brush |

| W30013BPGC | W300134BMS | MAIN APPLICATION Auto-Refinish |
|------------|------------|--|
| | | Material Type |
| ● | ● | Etch Primer |
| ● | ● | Primer - 1K |
| | | Filling Primer - 2K |
| | | Spray Putty |
| ✓ | ✓ | Stain |
| ● | ● | Lacquer - Furniture |
| ● | ● | Acrylic Lacquer |
| ✓ | ✓ | Enamel - Air Dry |
| ✓ | ✓ | Polyurethane/Urethane |
| ✓ | ✓ | Top Coat Solid Colour - 2K |
| ● | ● | Base Coat - 2K |
| ● | ● | Base Coat - Waterborne |
| ✓ | ✓ | Clear Coat - 2K |
| ✓ | ✓ | High Solids - 2K (80-85%) |
| | | Contact Adhesive |
| | | Epoxy |
| | | High Build Epoxy |
| | | Zinc |
| | | Chlorinated Rubber |
| | | Paint Viscosity (Ford Cup #4) |
| | | < 18 sec |
| ● | ● | 18 - 26 sec |
| | | 26 - 33 sec |
| ✓ | | - Ideal for this material application |
| ● | | - Suitable for this material application |

ACCESSORIES



PCG.2AG
200 ml
Nylon Pot



SEL.11
Spray Gun
Cleaning
Kit



015001
Super Lube



PCG.6AG
600 ml
Nylon Pot



Mix and Spray
System
Components

| TECHNICAL | Fluid Nozzle Size mm | Air Pressure @Gun Inlet bar (psi) | Air Consumption l/min (cfm) | Fluid Output ml/min | Fan Pattern mm | Air Cap No. | |
|--------------------------------|---|-----------------------------------|-----------------------------|---------------------|----------------|-------------|-----|
| Order No. W300134BMS | Description Spray gun & Mix & Spray System | 1.3 | 2 (28) | 160 (5.6) | 140 | 250 | BP4 |
| Order No. W30013BPGC | Description Spray gun & PCG.6AG 600 ml pot | 1.3 | 2 (28) | 160 (5.6) | 140 | 250 | BP4 |