

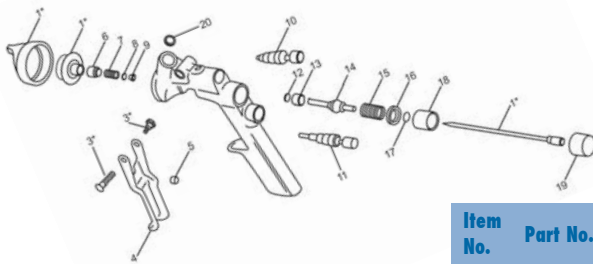
ATS

Centre Gravity Feed Spray Gun



PARTS LIST

- New ergonomic design
- Improved manoeuvrability
- High atomization spray pattern
- Gun head weighs only 520 g
- Big one litre metal pot
- Ideal 2K primer and polyester putty gun in the auto refinish industry
- 3.5 mm nozzle - ideal for gel coats



Item No.	Part No.	Description
1	BH089628	Aircap Nozzle Needle 1.5mm
1	BH089630	Aircap Nozzle Needle 1.9mm
1	BH089632	Aircap Nozzle Needle 2.5mm
1	BH089633	Aircap Nozzle Needle 3.5mm
3	BH088632	Trigger Pin
4	BL089614	Trigger
5	BS088450	# Air Valve/Trigger Spacer
6	BS088775	# Needle Packing Holder
7	BA088773	# Needle Packing Spring
8	BS088774	# Needle Packing Washer

Item No.	Part No.	Description
9	BC088765	# Needle Packing
9	BC088765	# Needle Packing
11	BH088506	Air Control Assembly
12	BD088082	# Air Valve O Ring
13	BS088084	# Air Valve O Ring Seat
14	BH088165	# Air Valve
15	BA108014	# Air Valve Spring
16	BS088085	# Air Valve Spring Holder
17	BD088086	# Air Valve Washer
18	BS088118	Air Valve Seat
19	BI088114	Fluid Control Knob
20	BE088732	# Fluid Inlet O Ring
22	BH138010	Service Kit - items with #
	BL088057	Metal Pot Ass'y - 1 Litre

ACCESSORIES



DR5
Spray Gun
Regulator with
Gauge



SEL.11
Spray Gun
Cleaning
Kit



015001
Super Lube



BL088057
1000 ml
Aluminium pot



GGS
Gravity Gun
Stand

ATS15	ATS19	ATS25	ATS35	MAIN APPLICATION Auto-Refinish
●				Material Type
●	✓			Etch Primer
	✓	●		Primer - 1K
		✓	●	Filling Primer - 2K
		✓	✓	Spray Putty
●				Stain
●	●			Lacquer - Furniture
●	●			Acrylic Lacquer
●	●			Enamel - Air Dry
●				Polyurethane/Urethane
●				Top Coat Solid Colour - 2K
●				Base Coat - 2K
				Base Coat - Waterborne
●				Clear Coat - 2K
●				High Solids - 2K (80-85%)
●	✓			Contact Adhesive
●	●	●		Epoxy
	✓	●		High Build Epoxy
		●	●	Zinc
		✓		Gel Coats
				Paint Viscosity (Ford Cup #4)
				< 18 sec
●	●	●		18 - 26 sec
		●	●	26 - 33 sec

✓ - Ideal for this material application
 ● - Suitable for this material application

TECHNICAL

Order No.	Description	Fluid Nozzle Size mm	Air Pressure @Gun Inlet bar (psi)	Air Usage (cfm)	Fan Pattern mm
ATS15	Spray gun & 1000 ml pot	1.5	3.5 (50)	12.5	290
ATS19	Spray gun & 1000 ml pot	1.9	3.5 (50)	14.6	300
ATS25	Spray gun & 1000 ml pot	2.5	3.5 (50)	15.1	300
ATS35	Spray gun & 1000 ml pot	3.5	3.5 (50)	16.3	300