

W400

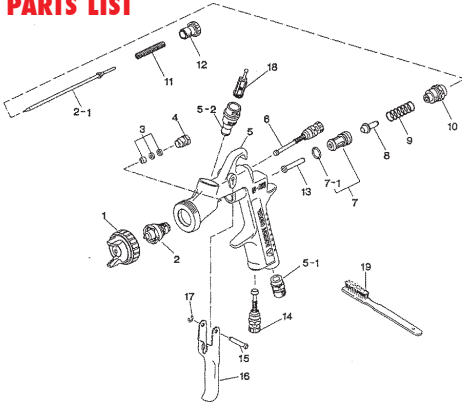
Centre Gravity Feed Spray Gun



- High Transfer Efficient - greater than 65% onto the job
- Less overspray = less wastage
- Designed for base coat, clear coat, solvent & waterborne applications
- Fine atomization spray pattern
- More paint coverage - fast operation
- New lightweight ergonomic design
- Gun head weight only 380 g
- Suitable for waterborne materials
- Easy to clean chrome body
- Ideal for medium to large paint jobs in the auto refinsh industry



PARTS LIST



| Item No. | Part No. | Description |
|----------|------------|---------------------------------|
| 1 | 93830611 | Air Cap Set LV2 (122, 142, 162) |
| 1 | 93859611 | Air Cap Set LV1 (182) |
| 1 | 93813611 | Air Cap Set W1 (251) |
| 1A | 93512600 # | Air Cap Cover Ring |
| 1B | 93708240 # | Air Cap Packing |
| 2 | 93527610 | Fluid Nozzle 1.2mm |
| 2 | 93611610 | Fluid Nozzle 1.3mm |
| 2 | 93540610 | Fluid Nozzle 1.4mm |
| 2 | 93541610 | Fluid Nozzle 1.6mm |
| 2 | 93525610 | Fluid Nozzle 1.8mm |
| 2 | 93523610 | Fluid Nozzle 2.5mm |

| Item | Part No. | No. | Description |
|------|----------|-----|-------------------------------------|
| 2-1 | 93829600 | | Fluid Needle 1.2mm |
| 2-1 | 93830600 | | Fluid Needle 1.3-1.6mm |
| 2-1 | 93831600 | | Fluid Needle 1.8mm |
| 2-1 | 93832600 | | Fluid Needle 2.5mm |
| 3 | 93834530 | | Needle Packing Set |
| 4 | 93581530 | | Needle Packing Seat |
| 5 | 93825610 | | Body Set, Gravity |
| 5-1 | 93660300 | | Air Nipple |
| 5-2 | 93650530 | | Fluid Nipple |
| 6 | 93842600 | | Fan Pattern Adjust Set |
| 7 | 93843530 | | Air Valve Seat Set |
| 7-1 | 96638008 | | O Ring |
| 8 | 93591530 | | Air Valve |
| 9 | 93719530 | | Air Valve Spring |
| 10 | 93844530 | | Fluid Adjust Guide |
| 11 | 93593530 | | Fluid Needle Spring |
| 12 | 93594531 | | Fluid Adjust Knob |
| 13 | 93595530 | | Air Valve Shaft |
| 14 | 93845530 | | Air Adjust Set |
| 15 | 93667360 | | Trigger Stud |
| 16 | 93517600 | | Trigger |
| 17 | 93912030 | | E Stopper (pkt 2) |
| 18 | SEL.3 | | Filter. Pkt 3 |
| 19 | 96990600 | | Brush |
| 20 | PCG.6PM | | 600 ml pot assembly |
| 21 | 94002300 | | Lid & Stopper |
| 22 | 94003320 | | Breather stopper |
| | PCG.7M | | Metal Pot 700 ml |
| | PCG7.RSK | | Lid for Metal Pot Pkt 2 |
| | K100 | | Gun Spanner |
| | W400RSK | | Reservice kit includes items with # |

| | W400122GC | W400132GC | W400142GC | W400162GC | W400182GC | W400251GC | MAIN APPLICATION Auto-Refinish |
|--|--|-----------|-----------|-----------|-----------|-----------|--|
| | ● | ✓ | ● | | | | Material Type |
| | | | | ● | ✓ | | Etch Primer |
| | | | | | | ● | Primer - 1K |
| | | | | | | ● | Filling Primer - 2K |
| | | | | | | ● | Spray Putty |
| | ● | ✓ | | | | | Stain |
| | | | | ● | ✓ | | Lacquer - Furniture |
| | | | | ● | ✓ | ● | Acrylic Lacquer |
| | | | | ● | ✓ | | Enamel - Air Dry |
| | ● | ✓ | ● | | | | Polyurethane/Urethane |
| | | | | ● | ✓ | | Top Coat Solid Colour - 2K |
| | | | | ● | ✓ | | Base Coat - 2K |
| | | | | ● | ✓ | | Base Coat - Waterborne |
| | ● | ● | ✓ | | | | Clear Coat - 2K |
| | | | | ● | ✓ | ● | High Solids - 2K (80-85%) |
| | | | | | ✓ | ● | Contact Adhesive |
| | | | | | ● | ● | Epoxy |
| | | | | | ● | ✓ | High Build Epoxy |
| | | | | | ● | ● | Zinc |
| | | | | | | ● | Chlorinated Rubber |
| | ● | ● | ● | ● | ● | ● | Paint Viscosity (Ford Cup #4) |
| | | | | | | | < 18 sec |
| | ● | ● | ● | ● | ● | ● | 18 - 26 sec |
| | | | | | | | 26 - 33 sec |
| | <p>✓ - Ideal for this material application</p> <p>● - Suitable for this material application</p> | | | | | | |

ACCESSORIES



PCG.6PM
600 ml pot

Mix and Spray
System
Components



SEL.11
Spray Gun
Cleaning
Kit



SEL.3
Paint Filters



015001
Super Lube

| Order No. | Description | Fluid Nozzle Size mm | Air Pressure @Gun Inlet bar (psi) | Air Consumption l/min (cfm) | Fluid Output ml/min | Fan Pattern mm | Air Cap No. |
|-----------|--------------------------------|----------------------|-----------------------------------|-----------------------------|---------------------|----------------|-------------|
| W400122GC | Spray gun & PCG.6PM 600 ml pot | 1.2 | 2.0 (28) | 270 (9.9) | 140 | 175 | LV2 |
| W400132GC | Spray gun & PCG.6PM 600 ml pot | 1.3 | 2.0 (28) | 270 (9.9) | 180 | 215 | LV2 |
| W400142GC | Spray gun & PCG.6PM 600 ml pot | 1.4 | 2.0 (28) | 270 (9.9) | 210 | 255 | LV2 |
| W400162GC | Spray gun & PCG.6PM 600 ml pot | 1.6 | 2.0 (28) | 270 (9.9) | 240 | 270 | LV2 |
| W400182GC | Spray gun & PCG.6PM 600 ml pot | 1.8 | 3.0 (43) | 290 (10.2) | 400 | 260 | LV1 |
| W400251GC | Spray gun & PCG.6PM 600 ml pot | 2.5 | 3.0 (43) | 290 (12.7) | 580 | 310 | W1 |